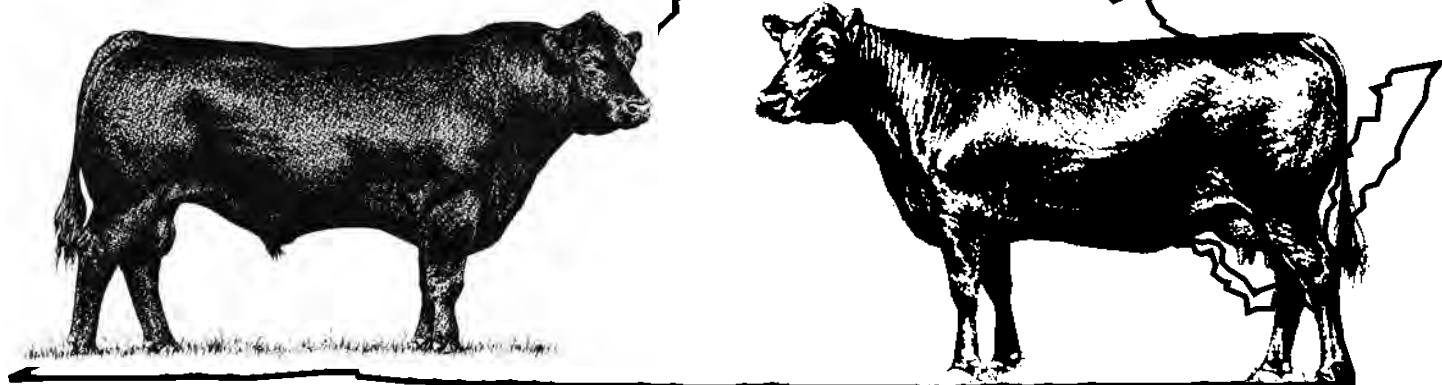


# SOUTHWEST VIRGINIA'S FINEST ANGUS SALE



**Saturday • December 1st, 2018 • Noon**

***SALE SITE***

***Washington County Fairgrounds • Abingdon, VA***

---

## **To All Beef Producers,**

**DEAR FRIENDS,**

We invite you to be with us on Saturday, December 1st for the 2018 version of the Southwest Virginia Finest Angus Sale. This year we will be selling approximately 60 lots of registered Angus females, which consist of bred cows, bred heifers, open heifers and cow/calf pairs.

The fall group of yearling Angus bulls from the SWVAA Performance Test will sell first, followed by the registered females. Forty-eight bulls were chosen to sell. They were all fed as a group at G&E Farms in Gretna, VA. They were weighed off test on 11/2/2018 and were evaluated by VDACS state graders. This is a good group of bulls from the SWVAA consignors. Most of the bulls qualified under the Virginia Quality Assurance program and are designated with a VQA symbol underneath the EPDs. Negative BVD PI test at delivery on all bulls.

The sale starts at 12 noon with the bulls selling first. You are welcome to come by on Friday, November 30th in the afternoon or on Saturday morning prior to the sale to evaluate the cattle being offered for sale.

I encourage you to study the pedigrees and performance information on these cattle. Many selling are sired by some of the most proven bulls available in the breed. The consignors of these cattle offered in this sale have been in business for a number of years. They are offering some of their best genetics from which you may select. The EPDs and pedigrees along with individual performance, will assist you in making your selections.

We look forward to seeing you on Saturday, December 1st. Please feel free to contact any of the consignors or the sale coordinator, George T. Johnstone, Jr. at 620-4901, or the sale auctioneer, Smith Reazor at 620-3123.

*George T. Johnstone Jr.*

# 1 BAR NUN RAMPAGE 1722

MCC DAYBREAK  
 QUAKER HILL RAMPAGE 0A36  
 QHF BLACKCAP 6E2 OF4V16 4355  
 G A R PROPHEI  
 WILLIAMS PROP ERICA 255 170  
 WILLIAMS ERICA 812

DOB 9/20/17  
 Tatt 1722  
 Reg. 18887250

CED	6
BW	3.5
WW	76
YW	135
M	37

Weight	BW	WW	ADG	YW
Ratio	79	597	4.57	1193
	100	100	119	101

**BULL**

Consignor: **BAR NUN CATTLE CO.**

# 2 BAR NUN RAMPAGE 1723

MCC DAYBREAK  
 QUAKER HILL RAMPAGE 0A36  
 QHF BLACKCAP 6E2 OF4V16 4355  
 G A R PREDESTINED  
 MGR RITA 0207  
 DEER VALLEY RITA 8343

DOB 9/16/17  
 Tatt 1723  
 Reg. 18887273

CED	1
BW	4.2
WW	77
YW	136
M	20

Weight	BW	WW	ADG	YW
Ratio	82	626	3.84	1154
	100	100	100	98

**VQA BULL**

Consignor: **BAR NUN CATTLE CO.**

# 3 MILLS BLACK GRANITE 7006

CONNEALY BLACK GRANITE  
 DALTONS BLACK GRANITE 5391  
 RITA 2G60 OF 9Q15 GAME ON  
 V A R DISCOVERY 2240  
 MILLS LADY JAYE 5022  
 44 LADY JAYE X881

DOB 8/24/17  
 Tatt 7006  
 Reg. 19257972

CED	12
BW	.8
WW	63
YW	112
M	39

Weight	BW	WW	ADG	YW
Ratio	65	723	3.54	1155
	103	93	92	98

**VQA BULL**

Consignor: **CLARKBOYS AT ELBA WEST**

# 4 HC SOUTHSIDE 17149594

NICHOLS EXTRA K205  
 K C F BENNETT SOUTHSIDE  
 K C F MISS 208 S11  
 HC IDENITY 118131  
 HC LUCY 149594  
 HC FOREVER LADY 9594

DOB 9/26/17  
 Tatt 7B14  
 Reg. 19154458

CED	5
BW	2.7
WW	66
YW	121
M	26

Weight	BW	WW	ADG	YW
Ratio	75	784	4.18	1384
	108	104	109	118

**VQA BULL**  
**DDP**

Consignor: **HAWKINSCREST**

# 5 JUSTAFEW DOUBLE VISION 707

CONNEALY REFLECTION  
 JINDRA DOUBLE VISION  
 HOFF RACHEL 8312 405  
 SYDGEN MANDATE 6079  
 JUSTAFEW MANDATE BONNIE 219  
 JUSTAFEW PENDLETON BONNIE 103

DOB 9/14/17  
 Tatt 707  
 Reg. 18893194

CED	8
BW	.8
WW	59
YW	113
M	27

Weight	BW	WW	ADG	YW
Ratio	68	633	3.68	1144
	100	105	96	97

**VQA BULL**

Consignor: **JUSTAFEW ANGUS**



**CONNEALY BLACK GRANITE**

# 6 JUSTAFEW UPSHOT 709

DOB 9/14/17  
Tatt 709  
Reg. 19143041

SITZ UPWARD 307R

EXAR UPSHOT 0562B

EXAR BARBARA T020

HARB PENDLETON 765 J H

JUSTAFEW PENDLTN BONNIE 001

JUSTAFEW BONNIE KAYE 111

CED	11
BW	.2
WW	55
YW	97
M	25

Weight	BW	WW	ADG	YW
	64	638	4.38	1135
Ratio	94	106	114	97

**VQA BULL**

Consignor: **JUSTAFEW ANGUS**

# 7 JUSTAFEW UPSHOT 703

DOB 9/4/17  
Tatt 703  
Reg. 19143043

SITZ UPWARD 307R

EXAR UPSHOT 0562B

EXAR BARBARA T020

SYDGEN C C & 7

JUSTAFEW CC&7 BONNIE 107

JUSTAFEW STRATEGIC BONNIE410

CED	8
BW	1.1
WW	49
YW	93
M	27

Weight	BW	WW	ADG	YW
	64	587	4.38	1142
Ratio	94	98	114	97

**VQA BULL**

Consignor: **JUSTAFEW ANGUS**

# 8 LAWSONS RENOWN E186

DOB 9/13/17  
Tatt E186  
Reg. 18978670

CONNEALY FINAL PRODUCT

SITZ INVESTMENT 660Z

SITZ ELLUNAS ELITE 656T

S A V 8180 TRAVELER 004

SHADY BROOK HENRIETTA 3532

SITZ HENRIETTA PRIDE 1510

CED	0
BW	2.4
WW	57
YW	107
M	24

Weight	BW	WW	ADG	YW
	83	677	4.21	1192
Ratio	101	98	110	101

**VQA BULL**

Consignor: **LAWSON FAMILY FARMS**

# 9 LAWSONS RENOWN E185

DOB 9/12/17  
Tatt E185  
Reg. 18978669

RITO 707 OF IDEAL 3407 7075

S A V RENOWN 3439

S A V BLACKCAP MAY 4136

EF COMPLEMENT 8088

BRIDGEVIEW RITA 1444

BRIDGEVIEW RITA 022

CED	-1
BW	3.1
WW	80
YW	141
M	25

Weight	BW	WW	ADG	YW
	84	777	3.52	1247
Ratio	105	112	92	106

**VQA BULL DDP**

Consignor: **LAWSON FAMILY FARMS**

# 10 LAWSONS INVESTMENT E181

DOB 9/10/17  
Tatt E181  
Reg. 18978668

CONNEALY FINAL PRODUCT

SITZ INVESTMENT 660Z

SITZ ELLUNAS ELITE 656T

COLEMAN CHARLO 0256

LAWSONS CHLOE B632

BASIN CHLOE 7T26

CED	4
BW	1.2
WW	64
YW	121
M	30

Weight	BW	WW	ADG	YW
	84	714	3.32	1128
Ratio	102	99	86	96

**VQA BULL**

Consignor: **LAWSON FAMILY FARMS**



**SITZ INVESTMENT 660Z**

# 11 LAWSONS SENSATION E178

DOB 9/6/17  
Tatt E178  
Reg. 18989768

S A V REGISTRY 2831  
S A V SENSATION 5615  
S A V BLACKCAP MAY 4136  
S A V HERITAGE 6295  
S A V ELBA 918  
S A V ELBA 1094

CED	5
BW	2.0
WW	53
YW	96
M	28

Weight	BW	WW	ADG	YW
Ratio	79	655	3.71	1079
	100	100	97	92

**VQA BULL**

Consignor: **LAWSON FAMILY FARMS**

# 14 LUCAS COMMONWEALTH 73S

DOB 9/29/17  
Tatt 73S  
Reg. 19062423

K C F BENNETT ABSOLUTE  
K C F BENNETT COMMONWEALTH  
K C F MISS QUALITY P164  
G A R PROPHET  
LUCAS LADY PROPHET 5750  
LUCAS LADY REFLECTION 043S

CED	11
BW	0
WW	59
YW	104
M	29

Weight	BW	WW	ADG	YW
Ratio	66	678	4.61	1296
	99	98	120	110

**VQA BULL**

Consignor: **LUCAS FARM/JOE LUCAS**

# 12 LUCAS 10X C640 726N

DOB 11/21/17  
Tatt 726N  
Reg. 19062431

A A R TEN X 7008 S A  
K C F BENNETT TEN X C640  
K C F MISS PRODUCER Z564  
G A R PROPHET  
LUCAS LADY PROPHET 350S  
LUCAS LADY KCF UPWARD 1690

CED	9
BW	.4
WW	68
YW	116
M	27

Weight	BW	WW	ADG	YW
Ratio	68	678	3.89	1199
	92	106	101	102

**VQA BULL**

Consignor: **LUCAS FARM/JOE LUCAS**

# 15 LUCAS 9M25 A352 784S

DOB 9/20/17  
Tatt 784S  
Reg. 19062415

RITO 9M25 OF RITA 5F56 PRED  
K C F BENNETT 9M25 A352  
K C F MISS IN FOCUS W64  
K C F BENNETT UPWARD W538  
LUCAS LADY UPWARD W538 2780  
LUCAS LADY 1407 302S

CED	10
BW	-.2
WW	53
YW	91
M	33

Weight	BW	WW	ADG	YW
Ratio	74	674	3.79	1204
	99	97	99	102

**VQA BULL**

Consignor: **LUCAS FARM/JOE LUCAS**

# 13 LUCAS BRUISER 74S

DOB 9/30/17  
Tatt 74S  
Reg. 19077216

S A V BISMARCK 5682  
S A V BRUISER 9164  
S A V MISS BOBBIE 7463  
G A R PROPHET  
LUCAS LADY PROPHET 462S  
LUCAS LADY IMPRESSION 259S

CED	5
BW	1.1
WW	69
YW	115
M	28

Weight	BW	WW	ADG	YW
Ratio	65	657	3.91	1107
	91	103	102	94

**VQA BULL**

Consignor: **LUCAS FARM/JOE LUCAS**



**G A R PROPHET**

# 16 LUCAS WHITLOCK 780S

S CHISUM 6175

DOB 9/19/17

Tatt 780S

S WHITLOCK 179

Reg. 19077210

S PRIDE ANNA 709

SUMMITCREST FOCUS 2U66

LUCAS LADY 2U66 3620

LUCAS LADY HRT 338 5F9

CED	6
BW	1.5
WW	56
YW	102
M	25

Weight	BW	WW	ADG	YW
Ratio	77	603	3.75	1144
	104	95	98	97

**VQA BULL**

Consignor: **LUCAS FARM/JOE LUCAS**



**S CHISUM 6175**

# 17 LUCAS REMEDY 774S

CONNEALY THUNDER

DOB 9/16/17

Tatt 774S

CTS REMEDY 1T01

Reg. 19144339

CTS 7V03 BELLEMERE MAID 9T02

K C F BENNETT COMMONWEALTH

LUCAS LADY COMMONWEALTH 548S

LUCAS LADY VT OBJ 065N

CED	4
BW	1.7
WW	55
YW	111
M	30

Weight	BW	WW	ADG	YW
Ratio	77	644	4.54	1270
	113	93	118	108

**VQA BULL**

Consignor: **LUCAS FARM/JOE LUCAS**

# 19 LUCAS COMMONWEALTH T7110

K C F BENNETT ABSOLUTE

DOB 10/3/17

Tatt 7110

K C F BENNETT COMMONWEALTH

Reg. 19062424

K C F MISS QUALITY P164

DEER VALLEY ALL IN

LUCAS LADY ALL IN T449S

LUCAS LADY QUALITY T2840

CED	6
BW	2.2
WW	69
YW	123
M	28

Weight	BW	WW	ADG	YW
Ratio	84	704	3.86	1189
	116	111	100	101

**VQA BULL**

Consignor: **LUCAS FARM/TIM LUCAS**

# 18 LUCAS 9M25 567S 7200

K C F BENNETT 9M25 A352

DOB 10/30/17

Tatt 7200

LUCAS 9M25 A352 T567S

Reg. 19062427

LUCAS LADY QUALITY T2840

K C F BENNETT COMMONWEALTH

LUCAS LADY COMMONWEALTH 452S

LUCAS LADY MANDATE 22J

CED	14
BW	-1.4
WW	63
YW	110
M	31

Weight	BW	WW	ADG	YW
Ratio	68	700	3.52	1191
	95	110	92	101

**VQA BULL**

Consignor: **LUCAS FARM/TIM LUCAS**

# 20 LUCAS NIAGRA M75S

HOOVER DAM

DOB 9/30/17

Tatt 75S

S S NIAGARA Z29

Reg. 19079849

JET S S X144

G A R GRID MAKER

VT GRID MAKER B23

G A R EXPECTATION H61

CED	6
BW	1.9
WW	51
YW	97
M	23

Weight	BW	WW	ADG	YW
Ratio	77	631	4.50	1213
	104	91	117	103

**VQA BULL**

Consignor: **LUCAS FARM/TIM LUCAS**



## BARSTOW BANKROLL B73

## 23 LUCAS BANK ROLL M768S

BARSTOW CASH

DOB 9/11/17

BARSTOW BANKROLL B73

Tatt 768S

BARSTOW MISS DIANNA Z25

Reg. 19077207

G A R PROPHET

LUCAS LADY PROPHET M4880

LUCAS LADY IMPRESSION M0530

CED	15
BW	-1.4
WW	59
YW	112
M	24

	BW	WW	ADG	YW
Weight	67	627	4.00	1193
Ratio	93	98	104	101

**VQA  
BULL**

Consignor: **LUCAS FARM/TIM LUCAS**

## 21 LUCAS WORK HORSE M72S

EF COMMANDO 1366

DOB 9/27/17

BALDRIDGE BRONC

Tatt 72S

BALDRIDGE ISABEL Y69

Reg. 19079925

G A R PROPHET

LUCAS LADY PROPHET M256S

LUCAS LADY IMPRESSION M0530

CED	15
BW	-1.6
WW	59
YW	103
M	28

	BW	WW	ADG	YW
Weight	69	666	3.34	1160
Ratio	92	96	87	99

**VQA  
BULL**

Consignor: **LUCAS FARM/TIM LUCAS**

## 24 LUCAS BANK ROLL T763S

BARSTOW CASH

DOB 9/9/17

BARSTOW BANKROLL B73

Tatt 763S

BARSTOW MISS DIANNA Z25

Reg. 19077205

K C F BENNETT COMMONWEALTH

LUCAS LADY COMMONWEALTH T464S

LUCAS LADY PROPHET T216F

CED	14
BW	-1.8
WW	52
YW	104
M	26

	BW	WW	ADG	YW
Weight	67	621	4.25	1212
Ratio	93	97	111	103

**VQA  
BULL**

Consignor: **LUCAS FARM/TIM LUCAS**

## 22 LUCAS COMRADE T772S

CONNELY CONSENSUS 7229

DOB 9/15/17

CONNELY COMRADE 1385

Tatt 772S

HAPPY GEE OF CONANGA 919

Reg. 19079812

K C F BENNETT UPWARD W538

LUCAS LADY UPWARD W538 T558S

LUCAS LADY PROTEGE T045S

CED	12
BW	-.8
WW	53
YW	100
M	26

	BW	WW	ADG	YW
Weight	63	676	3.46	1148
Ratio	95	98	90	98

**VQA  
BULL**

Consignor: **LUCAS FARM/TIM LUCAS**

## 25 MATNEY PATRIOT 7134

CONNELY CAPITALIST 028

DOB 10/15/17

DEER VALLEY PATRIOT 3222

Tatt 7134

DEER VALLEY RITA 0274

Reg. 19122645

G A R PROPHET

MATNEY PROFIT 1573

MATNEY PRIORITY 1377

CED	12
BW	.1
WW	68
YW	117
M	35

	BW	WW	ADG	YW
Weight	70	706	3.34	1175
Ratio	103	100	87	100

**VQA  
BULL**

Consignor: **MATNEY ANGUS FARM**

# 26 MATNEY NIAGARA 7129

DOB 10/6/17  
Tatt 7129  
Reg. 19122654

HOOVER DAM

S S NIAGARA Z29

JET S S X144

WERNER WAR PARTY 2417

MATNEY PARTY 1570

MATNEY 616 1203

CED	4
BW	2.3
WW	68
YW	133
M	24

Weight	BW	WW	ADG	YW
Ratio	65	686	3.55	1160
	97	97	92	99

**VQA BULL**

Consignor: **MATNEY ANGUS FARM**



**HOOVER DAM**

# 27 MATNEY NIAGARA 7126

DOB 9/28/17  
Tatt 7126  
Reg. 19122634

HOOVER DAM

S S NIAGARA Z29

JET S S X144

GAR DAYLIGHT H 3076

MATNEY DAYLIGHT 1556

MATNEY PRIDE 0876

CED	5
BW	1.4
WW	65
YW	121
M	34

Weight	BW	WW	ADG	YW
Ratio	64	727	4.30	1290
	95	103	112	110

**VQA BULL**

Consignor: **MATNEY ANGUS FARM**

# 29 MATNEY COMRADE 7102

DOB 9/18/17  
Tatt 7102  
Reg. 19122659

CONNEALY CONSENSUS 7229

CONNEALY COMRADE 1385

HAPPY GEE OF CONANGA 919

CONNEALY SHREK 4242

MATNEY SHREK 1515

MATNEY MISS 0880

CED	3
BW	1.8
WW	71
YW	124
M	18

Weight	BW	WW	ADG	YW
Ratio	70	758	3.34	1254
	103	108	87	107

**VQA BULL**

Consignor: **MATNEY ANGUS FARM**

# 28 MATNEY PATRIOT 7120

DOB 9/24/17  
Tatt 7120  
Reg. 19122655

CONNEALY CAPITALIST 028

DEER VALLEY PATRIOT 3222

DEER VALLEY RITA 0274

PA SAFEGUARD 021

MATNEY SAFEGUARD 1504

MATNEY R I 0869

CED	12
BW	-.1
WW	59
YW	109
M	35

Weight	BW	WW	ADG	YW
Ratio	70	750	4.79	1356
	103	107	125	115

**VQA BULL**

Consignor: **MATNEY ANGUS FARM**

# 30 MSA JOURNEYMAN 7E9

DOB 9/3/17  
Tatt 7E9  
Reg. 18913423

B/R FUTURE DIRECTION 4268

WR JOURNEY-1X74

2 BAR 5050 NEW DESIGN 7831

S S OBJECTIVE T510 OT26

MSA MISS BLACKBIRD 7T3

MSA MISS BLACKBIRD 5R2

CED	6
BW	1.7
WW	57
YW	94
M	29

Weight	BW	WW	ADG	YW
Ratio	68	611	3.38	1086
	103	100	88	92

**VQA BULL**

Consignor: **MOSSY SPRING ANGUS**

**31**

# M A F 18W24

DOB 11/16/17  
Tatt 24  
Reg. 18951795

SITZ UPWARD 307R

PLATTEMERE WEIGH UP K360

BARBARA OF PLATTEMERE 337

SITZ RAINMAKER 11127

M A F 13S17

M A F 10P19

CED	7
BW	2.0
WW	76
YW	135
M	30

	BW	WW	ADG	YW
Weight	73	760	3.36	1274
Ratio	99	100	87	108

**VQA BULL**

Consignor: **MULLINS ANGUS FARM**

**33**

# M A F 1815

DOB 9/30/17  
Tatt 15  
Reg. 18922602

MCC DAYBREAK

M A F 11D16

G V F ERICA 6171

W H S LIMELIGHT 64V

M A F 16L57

LYN LEW ROSEVERA 59L

CED	10
BW	2.3
WW	65
YW	122
M	37

	BW	WW	ADG	YW
Weight	73	793	4.54	1389
Ratio	105	102	118	118

**VQA BULL**

Consignor: **MULLINS ANGUS FARM**

**32**

# M A F 18R23

DOB 11/5/17  
Tatt 23  
Reg. 18951794

MCC DAYBREAK

QUAKER HILL RAMPAGE 0A36

QHF BLACKCAP 6E2 OF4V16 4355

G A R PROPHET

M A F 15P1

M A F 13R10

CED	9
BW	1.9
WW	76
YW	133
M	29

	BW	WW	ADG	YW
Weight	72	756	4.43	1424
Ratio	101	100	115	121

**VQA BULL**

Consignor: **MULLINS ANGUS FARM**

**34**

# M A F 18RA12

DOB 9/25/17  
Tatt 12  
Reg. 18922600

S A V FINAL ANSWER 0035

CONNEALY RIGHT ANSWER 746

HAPPY DELL OF CONANGA 262

SITZ UPWARD 307R

M A F 15U20

M A F 12W9

CED	9
BW	.6
WW	66
YW	118
M	30

	BW	WW	ADG	YW
Weight	72	833	4.93	1408
Ratio	97	104	128	120

**VQA BULL**

Consignor: **MULLINS ANGUS FARM**



**QUAKER HILL RAMPAGE 0A36**

**35**

# M A F 18R8

DOB 9/14/17  
Tatt 8  
Reg. 18922596

MCC DAYBREAK

QUAKER HILL RAMPAGE 0A36

QHF BLACKCAP 6E2 OF4V16 4355

SITZ UPWARD 307R

M A F 14U5

M A F 7Y6

CED	9
BW	1.9
WW	66
YW	117
M	24

	BW	WW	ADG	YW
Weight	74	791	3.48	1275
Ratio	97	98	91	108

**VQA BULL**

Consignor: **MULLINS ANGUS FARM**



**36**

# M A F 18W2

DOB 9/1/17

SITZ UPWARD 307R

Tatt 2

PLATTEMERE WEIGH UP K360

Reg. 18922590

BARBARA OF PLATTEMERE 337

HARB PENDLETON 765 J H

CED	10
BW	.3
WW	67
YW	118
M	31

M A F 10P9

G V F ERICA 6171

	BW	WW	ADG	YW
Weight	74	833	3.96	1388
Ratio	96	104	103	118

**VQA BULL**

Consignor: **MULLINS ANGUS FARM**



## PLATTEMERE WEIGH UP K360

**37**

# P/CC OLD DOMINION 7410

DOB 10/6/17

WOODHILL MAINLINE

Tatt 7410

44 OLD DOMINION

Reg. 19081323

ECHO RIDGE RITA B0116

PA POWER TOOL 9108

ERF ANGELINA 410 OF 1213

ECHO RIDGE ATLEY 1213

CED	8
BW	1.3
WW	65
YW	111
M	24

	BW	WW	ADG	YW
Weight	73	775	3.79	1230
Ratio	94	113	99	105

**VQA BULL**

Consignor: **PRATT CATTLE COMPANY**

**39**

# P/CC JOURNEY 178

DOB 9/17/17

B/R FUTURE DIRECTION 4268

Tatt 178

WR JOURNEY-1X74

Reg. 19081293

2 BAR 5050 NEW DESIGN 7831

S A V FINAL ANSWER 0035

EDGEWOOD LADY 968

HHF 878 LADY 440 579

CED	11
BW	.3
WW	52
YW	88
M	21

	BW	WW	ADG	YW
Weight	85	659	3.63	1176
Ratio	100	100	94	100

**VQA BULL**

Consignor: **PRATT CATTLE COMPANY**

**38**

# P/CC OLD DOMINION 4837

DOB 9/29/17

WOODHILL MAINLINE

Tatt 4837

44 OLD DOMINION

Reg. 19081317

ECHO RIDGE RITA B0116

ECHO RIDGE ND 5050 692

I/ 483 LUCY OF 0957

ECHO RIDGE RITA D27 0957

CED	9
BW	-.4
WW	51
YW	106
M	28

	BW	WW	ADG	YW
Weight	65	693	3.36	1198
Ratio	100	100	87	102

**VQA BULL DDP**

Consignor: **PRATT CATTLE COMPANY**

**40**

# P/CC INDEX 5567

DOB 9/13/17

G A R INGENUITY

Tatt 5567

V A R INDEX 3282

Reg. 19081318

SANDPOINT BLACKBIRD 8809

CONNEALY COUNSELOR

I/ 556 GRACE OF 376

ERF GRACE 376 OF C25

CED	4
BW	2.0
WW	59
YW	107
M	28

	BW	WW	ADG	YW
Weight	74	629	3.66	1158
Ratio	104	96	95	98

**VQA BULL**

Consignor: **PRATT CATTLE COMPANY**

# 41 P/CC DAYLIGHT 287

DOB 9/9/17

G A R DAYLIGHT

Tatt 287

ECHO RIDGE DAYLIGHT 2903

Reg. 19127818

ECHO RIDGE RITA B1117

HA PROGRAM 5652

CED	6
BW	1.9
WW	47
YW	90
M	26

JUSTAFEW PROGRAM BONNIE 226

JUSTAFEW TARGETED BONNIE 705

	BW	WW	ADG	YW
Weight	76	685	3.88	1234
Ratio	104	97	101	105

**VQA  
BULL**

Consignor: **PRATT CATTLE COMPANY**



**HA PROGRAM 5652**

# 42 P/CC OLD HICKORY 5727

DOB 9/7/17

PLATTEMERE WEIGH UP K360

Tatt 5727

DEER VALLEY OLD HICKORY

Reg. 19084398

DEER VALLEY RITA 1126

CONNEALY FINAL PRODUCT

CED	5
BW	1.7
WW	57
YW	100
M	31

J/ 572 BARBARA OF 361

ERF BARBARA 361 OF 1172

	BW	WW	ADG	YW
Weight	71	625	3.77	1178
Ratio	100	95	98	100

**VQA  
BULL**

Consignor: **PRATT CATTLE COMPANY**

# 44 GHS JENNINGS 796

DOB 9/29/17

BALDRIDGE WAYLON W34

Tatt 796

BALDRIDGE JENNINGS Z064

Reg. 19150529

BALDRIDGE MAVERICK T43

L I 598 BANDO 9074

D R LADY 7625

COLE LADY C911

CED	-1
BW	1.9
WW	60
YW	106
M	32

	BW	WW	ADG	YW
Weight	81	613	4.14	1151
Ratio	109	121	108	98

**VQA  
BULL**

Consignor: **STOVALL LIVESTOCK**

# 43 GHS RAMPAGE 797

DOB 9/29/17

MCC DAYBREAK

Tatt 797

QUAKER HILL RAMPAGE 0A36

Reg. 19152404

QHF BLACKCAP 6E2 OF4V16 4355

SCHURRTOP E267 X687

CED	4
BW	3.2
WW	64
YW	106
M	27

GHS CLOVA S954 X687 036

JANASTSCI 6I6 NOBLE 036

	BW	WW	ADG	YW
Weight	80	585	4.18	1145
Ratio	107	109	109	97

**VQA  
BULL**

Consignor: **STOVALL LIVESTOCK**



**MCC DAYBREAK**



**K C F BENNETT FORTRESS**



**GHS FORTRESS 724**

DOB 9/8/17

CONNEALY CONSENSUS

Tatt 724

K C F BENNETT FORTRESS

Reg. 19150571

THOMAS PATRICIA 9705

MATNEY 201-0663

GHS BEAUTY S944 0663 6106

LAZY ACRES BEAUTY 6106

CED	8
BW	.4
WW	59
YW	98
M	27

Weight	BW	WW	ADG	YW
Ratio	76	557	5.04	1101
	101	104	131	94

**VQA BULL**

Consignor: **STOVALL LIVESTOCK**



**GHS FORTRESS 762**

DOB 9/20/17

CONNEALY CONSENSUS

Tatt 762

K C F BENNETT FORTRESS

Reg. 19150585

THOMAS PATRICIA 9705

DR COLE COMMITMENT

D R DORINDA 5635

D R DORINDA 2530

CED	4
BW	1.3
WW	71
YW	124
M	40

Weight	BW	WW	ADG	YW
Ratio	85	651	5.11	1280
	115	122	133	109

**VQA BULL**

Consignor: **STOVALL LIVESTOCK**



**GHS RAMPAGE 714**

DOB 9/1/17

MCC DAYBREAK

Tatt 714

QUAKER HILL RAMPAGE 0A36

Reg. 19152386

QHF BLACKCAP 6E2 OF4V16 4355

K C F BENNETT ABSOLUTE

GHS RITA 41

GHS RITA 228

CED	7
BW	3.5
WW	81
YW	137
M	23

Weight	BW	WW	ADG	YW
Ratio	78	630	5.38	1313
	108	118	140	112

**VQA BULL**

Consignor: **STOVALL LIVESTOCK**



**GHS EXCITEMENT 743**

DOB 9/17/17

BASIN EXPEDITION R156

Tatt 743

BASIN EXCITEMENT

Reg. 19150405

BASIN LADY S532 AK

WERNER WAR PARTY 2417

GHS CLOVA 324

GHS CLOVA S954 X687 036

CED	7
BW	.9
WW	65
YW	116
M	27

Weight	BW	WW	ADG	YW
Ratio	74	540	4.63	1115
	100	101	120	95

**VQA BULL**

Consignor: **STOVALL LIVESTOCK**



**BASIN EXCITEMENT**

**49** **WDB MISS UPSHOT 208 1604**

SITZ UPWARD 307R

DOB 1/31/16

EXAR UPSHOT 0562B

Tatt 1604

EXAR BARBARA T020

Reg. 18528515

R R TRAVELER 5204

W D B DIV 05 5204 208

CED	5
BW	1.8
WW	41
YW	75
M	26

W D B MISS DIVIDEND 702 05

**COW**

Consignor: **BAIRD ANGUS FARM**

A daughter of the popular ABS bull, EXAR Upshot 0562B out of a proven herd matron sired by the Select Sires bull R R Traveler 5204. She weaned the heaviest calf in her spring group. Due to calve in mid-March 2019 to the service of G V F Bruiser 7034 whose EPD's are +7 +.1 +71 +131 +29 \$B +172.34 (Top 4% of the Angus breed). This young female is examined safe in calf.



**EXAR UPSHOT 0562B**

**50** **WDB MISS GRANITE 1301 1602**

CONNEALY CONSENSUS 7229

DOB 1/22/16

CONNEALY BLACK GRANITE

Tatt 1602

EURA ELGA OF CONANGA 9109

Reg. 18483221

TC CANDID 161

WDB MISS CANDID 009 1301

CED	13
BW	.2
WW	48
YW	88
M	20

W D B MISS I M 508 009

**COW**

Consignor: **BAIRD ANGUS FARM**

A daughter of the popular Connealy Black Granite out of a dam sired by TC Candid 161. Just a young coming three year old. She is bred to calve mid-April 2019 to the service of G V F Bruiser 7034 whose EPD's are +7 +.1 +71 +131 +29 \$B +172.34. 7034 is a son of S A V Bruiser 9164. Examined safe in calf.

**52** **WDB MISS GVF ANSWER 346 1429**

CONNEALY RIGHT ANSWER 746

DOB 3/18/14

G V F RIGHT ANSWER 1185

Tatt 1429

G V F PRIDE 5049

Reg. 17849476

W D B 7234'S FOCUS 113

W D B MISS FOCUS 113 914

CED	0
BW	3.2
WW	58
YW	104
M	18

W D B MS BURGESS COMMIT 914

**COW**

Consignor: **BAIRD ANGUS FARM**

A granddaughter of the popular Genex bull Connealy Right Answer 746. Great EPD's on this young four year old. A two year old daughter is retained working in the Baird Angus Farm herd. She sells due to calve 12/27/18 to the service of E W A High Weigh 3123 whose EPD's are +3 +2.3 +84 +147 +21 \$B +192.84 (Top 1% of the Angus breed). Examined safe in calf.

**51** **WDB MISS TOUR 1244 1601**

WERNER WAR PARTY 2417

DOB 1/15/16

R B TOUR OF DUTY 177

Tatt 1601

B A LADY 6807 305

Reg. 18483223

SITZ UPWARD 307R

WDB MISS UPWARD 731 1244

CED	6
BW	2.3
WW	58
YW	106
M	31

W D B MISS 878 214 731

**COW**

Consignor: **BAIRD ANGUS FARM**

A daughter of the ABS bull R B Tour of Duty 177 out of a dam sired by the Genex Masterpiece sire Sitz Upward 307R. Great EPD's on this young female. Just coming three year old due to calve late March 2019 to the service of G V F Bruiser 7034 whose EPD's are +7 +.1 +71 +131 +29 \$B +172.34 (Top 4% of the Angus breed). Examined safe in calf.



**R B TOUR OF DUTY 177**

**53A BAR NUN TEN X OF 1763**

MYTTY IN FOCUS

DOB 1/23/17  
Tatt 1703  
Reg. 18693425

A A R TEN X 7008 S A

A A R LADY KELTON 5551

G A R NEW DESIGN 5050

2 BAR 5050 NEW DESIGN 1763

2 BAR OBJECTIVE 7868

CED	14
BW	-.6
WW	65
YW	124
M	33

**COW**

**DDC**

Consignor: **BAR NUN CATTLE CO.**

A deep well made bred heifer with excellent EPD's. CE, BW, growth, Milk, heifer pregnancy and \$B, this heifer has it all. Bred to the best bull ever raised by Bar Nun Cattle. Due 3/2019 to Bar Nun Velocity 1701 whose EPD's are +13 +.2 +70 +114 +30 \$B +184.81.

**54 BAR NUN COMPOSURE OF 1308**

G A R NEW DESIGN 5050

DOB 5/28/14

G A R COMPOSURE

Tatt 1408

G A R OBJECTIVE 2345

Reg. 17845636

G A R PREDICTION

SJH PREDICTION OF 7163 1308

DRMCTR 111 RITA 7163

CED	8
BW	1.8
WW	75
YW	132
M	23

**COW**

Consignor: **BAR NUN CATTLE CO.**

This cow is 195 \$B, CE, Growth, Carcass, she has it all. Has a stout bull calf at her side by Bar Nun Bulldozer 815 whose EPD's are +8 +1.6 +73 +130 +25 \$B +181.87.

**53B BAR NUN GENERATION 1885**

CONNELLY CONSENSUS 7229

DOB 1/3/17

V A R GENERATION 2100

Tatt 1702

SANDPOINT BLACKBIRD 8809

Reg. 18669977

G A R NEW DESIGN 5050

BAR NUN OBJECTIVE 1885

G A R OBJECTIVE 1885

CED	11
BW	1.3
WW	55
YW	99
M	25

**COW**

**DDC**

Consignor: **BAR NUN CATTLE CO.**

A deep bodied heifer with loads of pedigree and phenotype. Granddam was dam of G A R Prophet. Top cow family in the Bar Nun herd. Due 3/2019 to Bar Nun Velocity 1701 whose EPD's are +13 +.2 +70 +114 +30 \$B +184.81.

**55 MGR RITA 0207**

B/R NEW DESIGN 036

DOB 12/25/10

G A R PREDESTINED

Tatt 0207

G A R EXT 4206

Reg. 16983681

RITO 112 OF 2536 RITO 616

DEER VALLEY RITA 8343

G A R EXT 614

CED	1
BW	4.0
WW	44
YW	72
M	20

**COW**

Consignor: **BAR NUN CATTLE CO.**

This cow will stand out on sale day. Loads of power and phenotype. Has a stout bull calf at side by Bar Nun Bulldozer 816 whose EPD's are +3 +3.4 +58 +102 +23 \$B +150.41.



**TC TOTAL 410**

**56 SJH TOTAL OF 183 0203**

BON VIEW NEW DESIGN 208

DOB 11/22/10

TC TOTAL 410

Tatt 0203

TC ERICA EILEEN 2047

Reg. 17161731

G A R PRECISION 1680

G A R PRECISION 183

G A R NEW DESIGN 1440

CED	5
BW	2.9
WW	54
YW	100
M	26

**COW**

Consignor: **BAR NUN CATTLE CO.**

Most powerful brood cow Bar Nun has had in the pasture. Every heifer calf she has produced was retained and stood out in the weaning pen. Due 2/2019 to Byergo Black Magic 3348 whose EPD's are +3 +2.9 +104 +188 +25 \$B +244.10.

# 57A DMB EMULOUS 628

A A R TEN X 7008 S A

DOB 2/8/18

S A V TEN VOLT 3039

Tatt 628

S A V BLACKCAP MAY 1416

Reg. 19082275

DMB MR BLACKLASS OF 5050 129

CED	10
BW	-.2
WW	41
YW	80
M	21

DMB MS EMULOUS 721

DMB MS NEW DESIGN OF H6 719

**COW**

Consignor: **DMB ANGUS**

A nice daughter of S A V Ten Volt 3039 out of a dam from the Emulous cow family. These heifers may not have the biggest EPD numbers but should make nice cows as they mature. Sells open.



**A A R TEN X 7008 S A**

# 57B DMB EMULOUS 918

A A R TEN X 7008 S A

DOB 1/28/18

S A V TEN VOLT 3039

Tatt 918

S A V BLACKCAP MAY 1416

Reg. 19082266

VISION UNANIMOUS 1418

CED	12
BW	-1.2
WW	51
YW	94
M	19

DMB EMULOUS 115

DMB MS EMULOUS 721

**COW**

Consignor: **DMB ANGUS**

A nice young female sired by S A V Ten Volt 3039 out of a dam from the Emulous cow family. This heifer has nice balanced EPD's and should make a nice cow as she matures. Notice the dam is sired by the Vision Unanimous 1418 bull. Sells open.

# 59 GAF BEXTOR FINAL ANSWER 1378

S A V FINAL ANSWER 0035

DOB 2/7/13

GAF FINAL OBJECTIVE 1192

Tatt 1378

LUCAS LADY OBJ 3J15 872N

Reg. 17533649

GAF NEW DESIGN 878 8026

GAF BAXTOR 878 1100

GAF BAXTOR 9050

CED	8
BW	.6
WW	46
YW	82
M	22

**COW**

**MIP**

Consignor: **GODSEY ANGUS FARM**

1378 checks all the right boxes; low birth weight, growth, docility, good milk. She is bred to the powerhouse Genomic tested bull, GAF Discovery 1774 whose EPD's are +2.2 +73 +133 +33 \$W 76.79. Due to calf 3/30/19.

# 58 GAF MISS FRONTIER 1385

BOYD FORWARD 6025

DOB 3/24/13

GAF BOYD FORWARD 9058

Tatt 1385

G V F BLACKBIRD 6033

Reg. 17560793

B/R NEW FRONTIER 095

CED	3
BW	1.8
WW	44
YW	75
M	25

ABERLEA UTP BLACKCAP 126

ABERLEA UTP BLACKCAP 44

**COW**

**DDP**

Consignor: **GODSEY ANGUS FARM**

1385 has been an excellent calf producer at Godsey Angus. Moderate framed with correct structure. She is bred to the powerhouse Genomic tested bull, GAF Discovery 1774 whose EPD's are +2.2 +73 +133 +33 \$W 76.79. Due to calf 3/6/19.

# 60 GAF MISS BISMARCK 1365

G A R GRID MAKER

DOB 1/22/13

S A V BISMARCK 5682

Tatt 1365

S A V ABIGALE 0451

Reg. 17530757

HARB PENDLETON 765 J H

GAF PENDLETON

LUCAS LADY SOLUTION 831S

CED	11
BW	.7
WW	52
YW	94
M	24

**COW**

Consignor: **GODSEY ANGUS FARM**

1365 has an excellent blood line that stems from S A V Bismarck 5682 and HARB Pendleton 765 J H. Calving ease producing cow. She is bred to the powerhouse Genomic tested bull, GAF Discovery 1774 whose EPD's are +2.2 +73 +133 +33 \$W 76.79. Calving date available sale day.

# 61 GAF OBJECTIVE FORWARD 1247

BOYD FORWARD 6025  
GAF BOYD FORWARD 9058  
G V F BLACKBIRD 6033  
QUAKER HILL OBJECTIVE 3J15  
LUCAS LADY OBJ 3J15 872N  
LUCAS KATINKA 7M6

DOB 4/1/12  
 Tatt 1247  
 Reg. 17213222

CED	-2
BW	3.3
WW	50
YW	81
M	26

**COW DDP**

## Consignor: GODSEY ANGUS FARM

1247 is moderate framed eye appealing cow that produces excellent calves. She will be a good addition to your herd. Calving ease producing cow. She is bred to the powerhouse Genomic tested bull, GAF Discovery 1774 whose EPD's are +2.2 +73 +133 +33 \$W 76.79. Calving date available sale day.

# 64A HARR ERICA RITA Y331 4250

CONNEALY CONSENSUS  
K C F BENNETT FORTRESS  
THOMAS PATRICIA 9705  
ALCOA NEW STANDARD 427  
HARR ERICA RITA 427 0450  
PA4D ERICA RITA 50JE

DOB 12/16/16  
 Tatt 4250  
 Reg. 18707258

CED	9
BW	1.1
WW	65
YW	113
M	26

**COW OHP**

## Consignor: HARR FARMS & CATTLE CO.

A great K C F Bennett Fortress daughter that comes from one of our best cow families. She sells bred to SS Niagara Z29 whose EPD's are +4 +.9 +71 +138 +28 \$B +174.42 on 6/2/18 then pasture exposed to HARR Spotlight 1319 2119 whose EPD's are +9 -.3 +55 +102 +25 \$B +126.74 from 7/7/18 to 10/15/18.

# 62 GRAYSTONE BLACKBIRD 483

CONNEALY ONWARD  
SITZ UPWARD 307R  
SITZ HENRIETTA PRIDE 81M  
BOYD NEW DAY 8005  
GRAYSTONE BLACKBIRD 684  
GRAYSTONE BLACKBIRD 6799

DOB 2/18/13  
 Tatt 483  
 Reg. 18404117

CED	6
BW	2.0
WW	53
YW	98
M	29

**COW**

## Consignor: GRAYSTONE FARM

A daughter of the Genex Masterpiece Sire, Sitz Upward 307R out of the top cow in the Graystone Farm herd. Her dam is sired by the Genex Masterpiece Sire, Boyd New Day 8005 and is from the Blackbird cow family. We have three full sisters still working in our herd along with her dam. Sells pasture exposed from 5/15/18 until 11/15/18 to Graystone Tour of Duty 486, a son of R B Tour of Duty 177. Breeding update sale day.

# 64B HARR ALLIANCE 307R 4002

CONNEALY ONWARD  
SITZ UPWARD 307R  
SITZ HENRIETTA PRIDE 81M  
G A R NEW DESIGN 5050  
HARR 5050 ALLIANCE 1102  
606 T510 OBJECTIVE 40

DOB 12/5/16  
 Tatt 4002  
 Reg. 18707257

CED	8
BW	1.7
WW	59
YW	110
M	31

**COW DDP**

## Consignor: HARR FARMS & CATTLE CO.

A very nice and powerful daughter of the popular Sitz Upward 307R. She will make a great addition to any herd. She sells bred to the highly proven calving ease bull K C F Bennett Fortress on 6/2/18 then pasture exposed to HARR Spotlight 1313 2119 whose EPD's are +9 -.3 +55 +102 +25 \$B +126.74 from 7/7/18 to 10/15/18.

# 63 GRAYSTONE BEROSA 948

S A F 598 BANDO 5175  
BOYD ON TARGET 1083  
BOYD FOREVER LADY 7095  
SITZ TRAVELER 8180  
GRAYSTONE BEROSA 9499  
GRAYSTONE BEROSA 670

DOB 2/15/08  
 Tatt 948  
 Reg. 17046685

CED	2
BW	1.8
WW	43
YW	85
M	21

**COW**

## Consignor: GRAYSTONE FARM

A proven producer sired by the ABS bull, Boyd On Target 1083 out of a dam sired by the legendary Sitz Traveler 8180; the dam my daughter showed. This female has produced test station bulls and replacement females for us. We are going to be using a S A V Renown 3439 son in our herd. Sells pasture exposed from 4/15/18 until 11/15/18 to Graystone Tour of Duty 486. Breeding update sale day.



**SITZ UPWARD 307R**

**65 HARR PRIDE 0829 3442**

G A R NEW DESIGN 5050

DOB 12/27/14

EF AUTHENTIC 0829

Tatt 3442

2 BAR OBJECTIVE 7836

Reg. 18133014

B/R AMBUSH 28

CED	9
BW	1.1
WW	62
YW	112
M	28

HAR PRIDE G142

ABSOLUTE PRIDE 1L2

**COW**



Consignor: **HARR FARMS & CATTLE CO.**

This young cow is sired by EF Authentic 0829 and out of a B/R Ambush 28 dam. She sells with a bull calf by her side sired by Connealy Blackhawk 6198 whose EPD's are +9 +1.1 +88 +160 +30 \$B +179.49. She was AI'd on 10/29/18 to Jindra Acclaim whose EPD's are +13 +.2 +82 +166 +26 \$B +221.45.

**EF AUTHENTIC 0829**

**66 HARR TOTAL FLOWER 3741**

BON VIEW NEW DESIGN 208

DOB 10/19/13

TC TOTAL 410

Tatt 3741

TC ERICA EILEEN 2047

Reg. 17883882

B/R NEW DESIGN 036

CED	1
BW	3.1
WW	56
YW	95
M	22

ABSOLUTE FLOWER 3N15

TC FLOWER 4056

**COW**

**67 HARR LADY PRIMROSE 1046**

EMULATION N BAR 5522

DOB 2/17/13

N BAR EMULATION EXT

Tatt 1046

N BAR PRIMROSE 2424

Reg. 17572074

S V F BANDOLIER

SOUTHERN FOREVER LADY 4572

BALDRIDGE FOREVER LADY 731F

CED	-2
BW	3.5
WW	37
YW	73
M	26

**COW**

Consignor: **HARR FARMS & CATTLE CO.**

A very nice and powerful daughter of TC Total 410 whose dam stems back to the TC Flower family. She is a proven producer in our herd. She sells bred to K C F Bennett Fortress on 5/16/18 and due 2/23/19.

Consignor: **HARR FARMS & CATTLE CO.**

A very productive N Bar Emulation EXT daughter in her prime that has produced excellent daughters that we have retained in our herd. She sells bred to calve 5/18/19 to Connealy Blackhawk whose EPD's are +9 +1.1 +88 +160 +30 \$B +179.49.



**N BAR EMULATION EXT**

**68 HARR PETUNIA EXT 0520**

EMULATION N BAR 5522

DOB 1/22/13

N BAR EMULATION EXT

Tatt 0520

N BAR PRIMROSE 2424

Reg. 17570714

BLUEGRASS NEW DESIGN 205

GRAYSTONE PETUNIA 238

GRAYSTONE PETUNIA 436

CED	2
BW	1.1
WW	47
YW	80
M	20

**COW**

Consignor: **HARR FARMS & CATTLE CO.**

A daughter of the proven N Bar Emulation EXT out of a dam sired by Bluegrass New Design 205. Her dam is a very correct female with great udder structure and she is one of the best producers in our herd. She sells with a bull calf by her side out of Jindra Acclaim born 10/21/18.



## 69A LAWSONS BARBARA E163

S A V REGISTRY 2831

DOB 5/14/17

LAWSONS REDEFINED B555

Tatt E163

ANGUS ALLIANCE DONNA 962

Reg. 19169076

RITO 4L60 OF 2536 BVND 208

CED	6
BW	1.7
WW	51
YW	87
M	26

THREE TREES BARBARA U1340

SITZ BARBARA PERFECTION 1882

**COW**

### Consignor: **LAWSON FAMILY FARMS**

A daughter of Lawsons Redefined B555 out of a dam from the Sitz Barbara cow family. Selling three nice matings from three different herd sires; they will be great investments and make solid, profitable cows in the future. Will be bred before sale day with sexed heifer semen to ZWT Summit 6507 whose EPD's are +9 +.5 +66 +116 +20.

## 70A LAWSONS WITCH E143

S A V RESOURCE 1441

DOB 3/26/17

LAWSONS RESOURCE C696

Tatt E143

S A V ELBA 918

Reg. 18892527

S A V REGISTRY 2831

CED	4
BW	1.7
WW	63
YW	109
M	22

LAWSONS WITCH B550

LAWS AJ WITCH W81

**COW**

### Consignor: **LAWSON FAMILY FARMS**

Solid bred heifer had a ADJ WW 724# stemming back to our Witch cow family. She sells AI bred to EXAR Equity, our new Spring herd sire battery whose EPDs are +12 +.4 +81 +150 +20. Due on 3/2/19 and then pasture exposed to Lawsons Discovery for March/April due date.

## 69B LAWSONS QUEEN E158

S A V RESOURCE 1441

DOB 5/5/17

LAWSONS RESOURCE C696

Tatt E158

S A V ELBA 918

Reg. 18978662

COLEMAN REGIS 904

CED	7
BW	1.7
WW	63
YW	110
M	24

LAWSONS QUEEN A497

YON QUEEN W215

**COW**

### Consignor: **LAWSON FAMILY FARMS**

A daughter of Lawson Resource C696 out of a dam sired by Coleman Regis 904 and descends from the Yon Queen cow family. Great EPD's on this young female. Will be bred before sale day with sexed heifer semen to ZWT Summit 6507 whose EPD's are +9 +.5 +66 +116 +20.



**S A V RESOURCE 1441**

## 69C LAWSONS ABIGALE E150

COLEMAN REGIS 122

DOB 4/12/17

COLEMAN REGIS 356

Tatt E150

COLEMAN DONNA 063

Reg. 18978659

S A V HESSTON 2217

CED	5
BW	2.7
WW	58
YW	104
M	21

LAWSONS ABIGALE C670

S A V ABIGALE 904

**COW**

### Consignor: **LAWSON FAMILY FARMS**

A daughter of Coleman Regis 356 out of a dam sired by S A V Hesston 2217. Her dam comes from the S A V Abigale cow family. Will be bred before sale day with sexed heifer semen to ZWT Summit 6507, a son of S A V Renown 3439 out of the Coleman Donna 714 cow.

## 70B LAWSONS DONNA E136

S A V REGISTRY 2831

DOB 2/26/17

S A V SENSATION 5615

Tatt E136

S A V BLACKCAP MAY 4136

Reg. 18894822

N BAR EMULATION EXT

CED	9
BW	-.5
WW	27
YW	46
M	23

LAWSONS DONNA B627

LAWSONS DONNA Y250

**COW**

### Consignor: **LAWSON FAMILY FARMS**

Nice bred heifer sired by World Record setting bull, S A V tying in the Donna cow family. Notice on the dam's side, EXT and 6807 in the pedigree. She is due March/April 2019 to Lawsons Discovery D990 whose EPD's are +5 +2.7 +62 +113 +21.

**71A** **LAWSONS ELBA E102**

RITO 707 OF IDEAL 3407 7075

DOB 2/18/17

S A V RENOWN 3439

Tatt E102

S A V BLACKCAP MAY 4136

Reg. 18892537

S A V HERITAGE 6295

CED	2
BW	2.6
WW	63
YW	112
M	30

S A V ELBA 918

S A V ELBA 1094

**COW**

Consignor: **LAWSON FAMILY FARMS**

Royally bred heifer with straight S A V breeding top and bottom. The Renown heifers are hard to turn loose of. I think Pedigree speaks for itself. She sells due March/April 2019 to Lawsons Discovery 990.



**COLEMAN REGIS 356**

**72A** **SHADY BROOK SHAUNA 6544**

SOO LINE MOTIVE 9016

DOB 9/29/16

SHADY BROOK TITAN 1026

Tatt 6544

DAVIS RITA 4001

Reg. 18678915

BASIN MAX 602C

CED	8
BW	2.1
WW	46
YW	88
M	24

JJ SHAUNA 3118

JJ SHAUNA 0042

**COW**

Consignor: **LAWSON FAMILY FARMS**

Very nice made bred heifer with a mixture of unique pedigrees. She sells bred to S A V Testament whose EPD's are +8 +2.1 +77 +133 +25. Due date Dec/Jan.

**72B** **LAWSONS CHLOE D961**

COLEMAN REGIS 122

DOB 5/18/16

COLEMAN REGIS 356

Tatt D961

COLEMAN DONNA 063

Reg. 18507716

VERMILION PAYWEIGHT J847

CED	6
BW	1.7
WW	63
YW	113
M	26

BASIN CHLOE 7T26

BASIN CHLOE 812L

**COW**

Consignor: **LAWSON FAMILY FARMS**

This nice long bred heifer stems from our Chloe cow family. She was bred from Basin Angus out in Montana. She sold our top selling bred heifer in our LFF Spring sale in 2017 to Coleman Angus for \$18,000. She sells bred to calve to S A V Testament. Due in Dec/Jan.

**71B** **LAWSONS HENRIETTA PRIDE E106**

CONNEALY CAPITALIST 028

DOB 2/5/17

COLEMAN VENTURE 403

Tatt E106

COLEMAN DONNA 714

Reg. 18892551

CONNEALY IMPRESSION

CED	8
BW	1.9
WW	70
YW	119
M	24

DEER VALLEY HENRIETTA 2212

SITZ HENRIETTA PRIDE 639T

**COW**

Consignor: **LAWSON FAMILY FARMS**

Super bred heifer out of our superior donor, 2212. She has highlighted progeny in the last three spring LFF sales. She does everything right. She also produced the top selling bull here at SWVA Spring sale in 2017 selling to Kenny Compton in North Tazewell. Sells bred to EXAR Equity 3/2/18 then pasture exposed to Lawsons Discovery 990.

**73A** **LUCAS LADY BANK ROLL T7170**

BARSTOW CASH

DOB 10/20/17

BARSTOW BANKROLL B73

Tatt 7170

BARSTOW MISS DIANNA Z25

Reg. 19079910

K C F BENNETT UPWARD W538

CED	11
BW	-.7
WW	59
YW	112
M	26

LUCAS LADY UPWARD W538 T268O

LUCAS LADY EXT 3S24

**COW**

Consignor: **LUCAS FARM**

A real nice heifer sired by the Select Sires calving ease bull, Barstow Bank Roll B73. Her dam is sired by K C F Bennett Upward W538, who is known for making powerful, heavy milking daughters with excellent feet. 7170 had a BW ratio of 92 along with a WW ratio of 101. Real nice yearling heifer sells open and ready to breed.

**73B** LUCAS LADY BANK ROLL T785S

BARSTOW CASH

DOB 9/20/17

BARSTOW BANKROLL B73

Tatt 785S

BARSTOW MISS DIANNA Z25

Reg. 19079914

SINCLAIR EXTRAVAGANT 6X7

CED	12
BW	-1.1
WW	50
YW	101
M	25

LUCAS LADY EXTRAVAGANT T9450

LUCAS LADY 6595 T4032

**COW**

**DDP**

Consignor: **LUCAS FARM**

A daughter of the up and coming Select Sires bull Barstow Bank Roll B73, whose calves are born easy and have a showy look to them. 785S is a negative birth weight calf with over 100 pounds of yearling. Sells open and ready to breed.



**BARSTOW BANKROLL B73**

**73C** LUCAS LADY BANK ROLL T779S

BARSTOW CASH

DOB 9/19/17

BARSTOW BANKROLL B73

Tatt 779S

BARSTOW MISS DIANNA Z25

Reg. 19079913

HARB PENDLETON 765 J H

CED	12
BW	-.5
WW	50
YW	99
M	21

LUCAS LADY PENDLETON T0510

LUCAS LADY GRID MAKER T4S26

**COW**

Consignor: **LUCAS FARM**

Another daughter sired by the Barstow Bankroll B73 bull out of a powerful HARB Pendleton 765 J H dam. 779S has a +12 CED and a negative birth weight. A real nice set of paternal sisters who are similar in size and age. Sells open and ready to breed.

**74B** LUCAS LADY REMEDY 765S

CONNEALY THUNDER

DOB 9/10/17

CTS REMEDY 1T01

Tatt 765S

CTS 7V03 BELLEMERE MAID 9T02

Reg. 19079860

K C F BENNETT COMMONWEALTH

LUCAS LADY COMMONWEALTH 547S

LUCAS LADY 004 814F

CED	3
BW	1.1
WW	50
YW	101
M	30

**COW**

Consignor: **LUCAS FARM**

A daughter of the Select Sires bull, CTS Remedy 1T01. The Remedy cattle are known for making great cows that exhibit extra bone to them and have exceptional feet and udder quality. 765S is a nice smooth made heifer. Sells open and ready to breed.

**74A** LUCAS LADY COMMONWEALTH 7120

K C F BENNETT ABSOLUTE

DOB 10/6/17

K C F BENNETT COMMONWEALTH

Tatt 7120

K C F MISS QUALITY P164

Reg. 19062425

DEER VALLEY ALL IN

CED	10
BW	.7
WW	69
YW	121
M	27

LUCAS LADY ALL IN 5920

LUCAS LADY IMPRESSION 259S

**COW**

Consignor: **LUCAS FARM**

A daughter of the Knoll Crest and Lucas Farm herd sire, K C F Bennett Commonwealth. The Commonwealth cattle are making great easy keeping cows with plenty of milk. The Deer Valley All In dam of 7120 is an own daughter of the great Impression sired cow that was very successful in the show ring and is also the granddam of Lucas Tonic who sold to Semex Beef last December. 7120 is a low birth weight heifer with over 120 pounds of yearling weight. Real nice open heifer that sells open and ready to breed.

**74C** LUCAS LADY NIAGRA 764S

HOOVER DAM

DOB 9/10/17

S S NIAGARA Z29

Tatt 764S

JET S S X144

Reg. 19079836

K C F BENNETT COMMONWEALTH

LUCAS LADY COMMONWEALTH 440A

LUCAS LADY BISMARCK 150S

CED	5
BW	1.8
WW	61
YW	117
M	26

**COW**

Consignor: **LUCAS FARM**

A real nice heifer sired by the popular Select Sires bull, S S Niagara Z29 whose dam is stacked with some of the great legends of the angus breed, Bismarck and Final Answer. This is a solid group of open heifers that are very similar in age, EPD's and size. Sells open and ready to breed.

**75 LUCAS LADY COMMONWEALTH 536M**

K C F BENNETT ABSOLUTE  
K C F BENNETT COMMONWEALTH  
K C F MISS QUALITY P164  
G A R PROPHET  
LUCAS LADY PROPHET 314F  
LUCAS LADY 2V1 631O

DOB 3/29/15  
Tatt 536M  
Reg. 18168963

CED	7
BW	1.0
WW	60
YW	106
M	30

**COW**

**DDP**

Consignor: **LUCAS FARM**

Another low birth weight cow sired by K C F Bennett Commonwealth. The G A R Prophet dam of 536M is a full sister to the \$8,000 Lucas Prophet bull that sold through the VA BCIA bull sale. 536M posts a WR 2@101. Her 2018 bull calf is currently on test at the SWVA BCIA bull test. 536M sells bred to the high growth Select Sires bull, Quaker Hill Manning on 5/5/18 then pasture exposed to K C F Bennett Ten X C640 from 5/21/18 until 10/1/18.



**K C F BENNETT ABSOLUTE**

**76 LUCAS LADY TRACTION 514J**

SITZ TOP GAME 561X  
JMB TRACTION 292  
JMB EMULOTA 013  
G A R PROPHET  
LUCAS LADY PROPHET 221F  
LUCAS LADY PERFORMER 637O

DOB 1/31/15  
Tatt 514J  
Reg. 18168946

CED	2
BW	2.1
WW	69
YW	118
M	35

**COW**

Consignor: **LUCAS FARM**

A daughter of the outcross and high maternal bull JMB Traction 292 from the Select Sires lineup. 514J is a solid performing cow with a weaning ratio of 104 on 2 calves. Her G A R Prophet dam is an ideal cow. Solid set of EPD's on 514J with a WW of 70 and YW of 118 along with a \$W of 70. Her 2018 bull calf is currently on test. 514J sells bred to Bank Roll on 5/4/18 then pasture exposed to K C F Bennett Ten X C640 from 5/21/18 until 10/1/18.

**78 LUCAS LADY COMMONWEALTH 440A**

K C F BENNETT ABSOLUTE  
K C F BENNETT COMMONWEALTH  
K C F MISS QUALITY P164  
S A V BISMARCK 5682  
LUCAS LADY BISMARCK 150S  
LUCAS LADY FINAL ANSWER 919F

DOB 4/16/14  
Tatt 440A  
Reg. 17910789

CED	7
BW	1.9
WW	62
YW	110
M	26

**COW**

Consignor: **LUCAS FARM**

A stout made daughter sired by K C F Bennett Commonwealth. The maternal side of 440A is stacked with some of the breed's great sires, Bismarck and Final Answer. This heavy milking 4.5 year old has a heifer calf at side born 10/12/18 (BW 65 lbs) sired by K C F Bennett Ten X C640.

**77 LUCAS LADY TRACTION 510J**

SITZ TOP GAME 561X  
JMB TRACTION 292  
JMB EMULOTA 013  
H S A F BANDO 1961  
LUCAS LADY BANDO 1961 838O  
W S ALUM BANK 2RT2

DOB 1/26/15  
Tatt 510J  
Reg. 18168943

CED	-3
BW	3.1
WW	62
YW	114
M	28

**COW**

Consignor: **LUCAS FARM**

Another deep and soggy made young cow sired by JMB Traction 292. The Traction cattle make tremendous cows with plenty of milk and stand on a strong foot. Her 2018 bull calf is currently on test at Gretna. These two paternal sisters are young cows that are solid producers and have a bright future in front of them. 510J sells bred to K C F Bennett Ten X C640, our pick of the Ten X sons at the 2016 Knoll Crest sale. His calves have a lot of depth with extra length to them. Sells pasture exposed from 5/21/18 until 10/1/18.

**79 LUCAS LADY UPWARD W538 T428F**

SITZ UPWARD 307R  
K C F BENNETT UPWARD W538  
K C F MISS RETAIL PROD S480  
CONNEALY REFLECTION  
LUCAS LADY REFLECTION T03J  
LUCAS LADY FORESIGHT T734O

DOB 2/22/14  
Tatt 428F  
Reg. 17779250

CED	-1
BW	4.0
WW	73
YW	126
M	25

**COW**

Consignor: **LUCAS FARM**

A powerful daughter sired by K C F Bennett Upward W538 out of an ideal Connealy Reflection cow. There is a lot of growth in this young cow with a weaning weight EPD of 73 and yearling of 126. 428F posts a WR of 3@101 and a YR of 2@106. Her first calf sold to FRZ Angus in Pennsylvania as an open heifer. 428F sells bred to the calving ease Barstow Bank Roll on 5/5/18 then pasture exposed to K C F Bennett Ten X C640 from 5/21/18 until 10/1/18.

**80** LUCAS LADY VT OBJECTIVE 326M

S S OBJECTIVE T510 OT26

DOB 3/8/13

VT OBJECTIVE DAF 802

Tatt 326M

VT 208 NEW DESIGN B36

Reg. 17526854

THREE TREES ROCK ON 0059

LUCAS LADY ROCK ON 4F10

LUCAS LADY ILLINI 9S16

CED	11
BW	.3
WW	48
YW	87
M	29

**COW**

Consignor: **LUCAS FARM**

A daughter sired by the VT Objective DAF 802 bull. This calving ease cow has a birth ratio of 4@97 and a yearling ratio of 104 on 2 calves. 326M is a moderately made cow who really works hard raising her calves. Her 2018 bull calf is on test at Gretna. 326M sells bred to Quaker Hill Manning on 5/5/18 then pasture exposed to K C F Bennett Ten X C640 from 5/21/18 until 10/1/18.



**S S OBJECTIVE T510 OT26**

**81** LUCAS LADY UPWARD W538 325F

SITZ UPWARD 307R

DOB 2/24/13

K C F BENNETT UPWARD W538

Tatt 325F

K C F MISS RETAIL PROD S480

Reg. 17526848

H S A F BANDO 1961

CED	0
BW	3.2
WW	66
YW	111
M	22

LUCAS LADY BANDO 1961 7530

LUCAS LADY 2M14 F2

**COW**

Consignor: **LUCAS FARM**

A very nice daughter sired by the K C F Bennett Upward W538 bull. 325F is a proven producer who is just reaching her prime years. She posts a BR of 4@98, WR of 4@98 and a YR of 3@101 while having a IMF ratio of 1@111. Her 2015 daughter was a sale feature at the 2017 VA Beef Expo selling to Doug Hughes' Little Windy Hills Farm in Max Meadows. 325F sells bred to the popular Select Sires bull, Niagara on 5/4/18 then pasture exposed to K C F Bennett Ten X C640 from 5/21/18 until 10/1/18. These are two nice, powerful paternal sisters.

**82** LUCAS LADY KCF UPWARD M239M

SITZ UPWARD 307R

DOB 3/30/12

K C F BENNETT UPWARD W538

Tatt 239M

K C F MISS RETAIL PROD S480

Reg. 17249166

RITO 5F11 OF RITA 8K51 FD

CED	5
BW	3.1
WW	51
YW	88
M	24

LUCAS LADY RITO 5F11 T759N

VT GRID MAKER B23

**COW**

Consignor: **LUCAS FARM**

A deep and soggy made cow sired by K C F Bennett Upward W538. 239M is moderate in size and is thick made. She has a bull calf at side that has the look to be a herd bull. Her bull calf, born 10/24/18 (BW 78 lbs) is sired by the high growth ABS bull, DL Dually. The Dually cattle have a soggy look with added dimension and muscle expression. This is a rare opportunity to get a Dually calf since there is limited semen.

**83** LUCAS LADY VT OBJ T1710

S S OBJECTIVE T510 OT26

DOB 10/25/11

VT OBJECTIVE DAF 802

Tatt 1710

VT 208 NEW DESIGN B36

Reg. 17121668

G A R RETAIL PRODUCT

VT RETAIL PRODUCT D78

VT 1407 NEW DESIGN B6

CED	7
BW	1.5
WW	42
YW	86
M	29

**COW**

Consignor: **LUCAS FARM**

A daughter of the great VT Objective DAF 802 bull whose G A R Retail Product dam was bred in the VT research herd. 1710 is a solid producing cow. She sells with a bull calf at side born 10/27/18 (BW 70 lbs) sired by the low birth weight high growth Quaker Hill Manning of the Select Sires lineup.

**84** MSA MISS BLACKBIRD 5C12

PA POWER TOOL 9108

DOB 9/21/15

PA FULL POWER 1208

Tatt 5C12

PINE VIEW SQR RITA W091

Reg. 18321798

VPI COMANCHE 9W53 ET

MSA MISS BLACKBIRD 2Z16

MSA MISS BLACKBIRD 9W5

CED	5
BW	.5
WW	60
YW	108
M	29

**COW**

Consignor: **MOSSY SPRING ANGUS**

This exceptional young cow by the ABS maternal sire, PA Full Power 1208, offers an impeccable script of genomic-enhanced EPDs that ranks in the top 15% of the breed on 14 different traits. Her dam records an impressive BR 4@91, WR 4@106, and YR 4@106. This moderately-framed female sells open with a fancy heifer calf at side born 9/30/18, sired by the multi-purpose, high performance bull, Jindra Acclaim. Certified and Accredited herd.

**85** **MSA MISS BLACKBIRD 3A2**

MYTTY IN FOCUS

DOB 2/28/13

A A R TEN X 7008 S A

Tatt 3A2

A A R LADY KELTON 5551

Reg. 17555502

QUAKER HILL OBJECTIVE 3J15

CED	14
BW	-.4
WW	53
YW	91
M	31

MSA MISS BLACKBIRD 8U2

E E E MISS BLACKBIRD 3N6

**COW**

Consignor: **MOSSY SPRING ANGUS**

Here is a highly productive daughter by the Pathfinder sire, A A R Ten X 7008 S A, sporting a progeny production record for BR 3@99 and WR 3@101 with two daughters in production with an average nursing ratio of 109. As her genomic-enhanced EPDs indicate, this double-digit CED and CEM female ranks in the elite 3% for \$W and the upper 10% for MARB among current dams in the breed. 3A2 sells open with a promising herd sire prospect at side born 9/15/18, sired by the Genex superstar, S Whitlock 179. Certified and Accredited herd.

**86** **M A F 17R74**

MCC DAYBREAK

DOB 9/22/16

QUAKER HILL RAMPAGE 0A36

Tatt 74

QHF BLACKCAP 6E2 OF4V16 4355

Reg. 18654954

R/M IRONSTONE 4047

CED	5
BW	3.7
WW	61
YW	110
M	22

M A F 1215

M A F 7Y6

**COW**

Consignor: **MULLINS ANGUS FARM**

A daughter of the very popular ABS bull Quaker Hill Rampage 0A36. Outstanding EPD's on this young female. Sells pasture exposed from 2/12/18 until 9/12/18 to the service of M A F 17R83 whose EPD's are +11 +.1 +53 +96 +28 \$B +125.36. Breed update sale day.



**CONNEALY RIGHT ANSWER 746**

**87** **M A F 17C67**

CONNEALY CONSENSUS 7229

DOB 9/1/16

CONNEALY COMRADE 1385

Tatt 67

HAPPY GEE OF CONANGA 919

Reg. 18654936

G A R PROPHET

CED	15
BW	-2.0
WW	59
YW	116
M	40

M A F 15P1

M A F 13R10

**COW**

Consignor: **MULLINS ANGUS FARM**

A daughter of the Select Sires bull Connealy Comrade 1385 out of a dam sired by G A R Prophet. Outstanding EPD's on this young female who has a \$B +146.15. She sells with a bull calf born 10/28/18 sired by M A F 17R83 who is a son of the highly proven Genex sire, Connealy Right Answer 746.

**88** **M A F 11W22**

SITZ ALLIANCE 6595

DOB 11/24/10

WAR ALLIANCE 9126 6006

Tatt 1122

WAR BANDO 6006 598 4053

Reg. 16794054

N BAR EMULATION EXT

BRANDY ROCK BLACKBIRD 1057

CED	6
BW	1.1
WW	51
YW	90
M	26

BRANDY ROCK BLACKBIRD 8079

**COW**

Consignor: **MULLINS ANGUS FARM**

A daughter of the Accelerated Genetics curve bender WAR Alliance 9126 6006 out of a dam sired by the Angus breed legend N Bar Emulation EXT. A proven producer who has worked very well in the Mullins Angus Farm herd. She sells with a 11/2/18 heifer calf sired by M A F 17R83 whose EPD's are +11 +.1 +53 +96 +28 \$B +125.36.

**89** **M A F 11512**

B/R NEW DESIGN 036

DOB 9/24/10

G A R NEW DESIGN 5050

Tatt 1112

G A R PRECISION 706

Reg. 16794043

QUAKER HILL OBJECTIVE 3J15

M A F 8J20

JUSTAFEW DESIGNER BONNIE 002

CED	10
BW	.5
WW	55
YW	94
M	29

**COW**

Consignor: **MULLINS ANGUS FARM**

A daughter of the Select Sires bull G A R New Design 5050 out of a dam from the Justafew Bonnie cow family. Pasture exposed from 1/12/18 until 9/12/18 to M A F 17R83 who is a son of the Genex bull Connealy Right Answer 746. Breeding update sale day.

# 90A POWELL ERICA 7055

V A R DISCOVERY 2240

DOB 5/1/17

MGR TREASURE

Tatt 7055

SJH IMPRESSION OF 6108 1614

Reg. 18783963

G A R PROPHET

CED	14
BW	.8
WW	70
YW	121
M	21

WILLIAMS PROP ERICA UP 255-2

WILLIAMS ERICA 812

**COW**

Consignor: **POWELL FARM**

A daughter of the popular MGR Treasure bull whose daughters are feminine and broody with exceptional foot quality. The dam is a G A R Prophet daughter working as a donor in the Powell Farm herd. Outstanding EPD's on this bred heifer. Sells due on 5/15/19 to the service of E W A Peyton 642 whose EPD's are +13 +2.6 +98 +174 +31 \$B +217.55 (Top 1% of the Angus breed).

# 91B POWELL ERICA 7042

MCC DAYBREAK

DOB 4/22/17

QUAKER HILL RAMPAGE 0A36

Tatt 7042

QHF BLACKCAP 6E2 OF4V16 4355

Reg. 18774556

G A R PROPHET

CED	6
BW	2.8
WW	84
YW	138
M	21

WILLIAMS PROP ERICA 255-139

WILLIAMS ERICA 812

**COW**

Consignor: **POWELL FARM**

A daughter of the ABS Global and Powell Farm herd sire, Quaker Hill Rampage 0A36 who is one of the most popular and highly proven bulls in the industry. Her dam is a G A R Prophet daughter who has seen service in the donor program at Powell Farms. Her WW EPD and YW EPD are in the top 1% of the Angus breed. Her \$B +174.32 is in the top 3%. Sells due on 5/13/19 to the service of E W A Peyton 642 whose EPD's are +13 +2.6 +98 +174 +31 \$B +217.55 (Top 1% of the Angus breed).

# 90B POWELL LADY PRIDEVA 7032

V A R DISCOVERY 2240

DOB 4/18/17

MGR TREASURE

Tatt 7032

SJH IMPRESSION OF 6108 1614

Reg. 18773191

WERNER WAR PARTY 2417

CED	14
BW	-.4
WW	62
YW	125
M	27

R B LADY PARTY 167-305

B A LADY 6807 305

**COW**

Consignor: **POWELL FARM**

A daughter of the popular V A R Discovery 2240 son, MGR Treasure, who is a proven heifer bull along with being an elite growth and carcass quality sire. The dam of this heifer, R B Lady Party 167-305, is a full sister to the ABS bull, R B Tour of Duty 177. Top 3% of the Angus breed for CED and top 4% for YW. She is due to calve 4/22/19 to the service of E W A Peyton 642 whose EPD's are +13 +2.6 +98 +174 +31 \$B +217.55 (Top 1% of the Angus breed).



**MGR TREASURE**

# 91A POWELL ERICA 7061

V A R DISCOVERY 2240

DOB 5/8/17

ECO LOMBARDI 1512

Tatt 7061

RB LADY 7125-890-2170

Reg. 18788553

G A R PROPHET

CED	9
BW	.8
WW	79
YW	134
M	29

WILLIAMS PROP ERICA 255 902

WILLIAMS ERICA 812

**COW**

Consignor: **POWELL FARM**

A daughter of the popular V A R Discovery 2240 son, ECO Lombardi 1512 who is a dynamic young sire that is adding frame size and explosive growth to his first progeny. Her dam is a daughter of G A R Prophet serving in the donor program at Powell Farms. Her WW EPD is in the top 1% of the Angus breed and her YW EPD is in the top 2% of the Angus breed. Sells due on 4/22/19 to the service of E W A Peyton 642 whose EPD's are +13 +2.6 +98 +174 +31 \$B +217.55 (Top 1% of the Angus breed).

# 92 ECHO RIDGE RITA 601

G A R DAYLIGHT

DOB 1/2/16

ECHO RIDGE DAYLIGHT 2903

Tatt 601

ECHO RIDGE RITA B1117

Reg. 18707891

G A R PRIME DESIGN

CED	6
BW	1.2
WW	41
YW	76
M	27

ECHO RIDGE RITA B0114

G A R PRIME TIME B011

**COW**

Consignor: **PRATT CATTLE COMPANY**

A nice young female sired by Echo Ridge Daylight 2903 out of a dam sired by G A R Prime Design. She is a member of the Echo Ridge Rita cow family. She is due to calve 12/21/18 to the service of 44 Teammate whose EPD's are +12 +.4 +56 +106 +38 \$B +139.62.

# 93 J/ 620 ENCHANTRESS OF 404

SITZ TOP GAME 561X  
44 TEAMMATE

DOB 12/19/15  
Tatt 620  
Reg. 18539680

EF BLACKCAP 1067  
CHERRY CRK HIGHER STANDARD  
ERF ENCHANTRESS 404 OF 1203  
ECHO RIDGE ENCHANTRESS 1203

CED	11
BW	1.1
WW	55
YW	101
M	38

**COW**

Consignor: **PRATT CATTLE COMPANY**  
A daughter of the 44 Teammate bull who is sired by Sitz Top Game 561X. She is a member of the Enchantress cow family. Excellent EPD's on this young cow. She is due to calve 1/11/19 to 44 Old Dominion who is a son of Woodhill Mainline.

# 96 RAINBOW PETAL 289

G A R GRID MAKER  
S A V BISMARCK 5682

DOB 9/27/16  
Tatt 289  
Reg. 18732432

S A V ABIGALE 0451  
S A V THUNDERBIRD 9061  
RAINBOW PETAL 265

CED	7
BW	1.6
WW	59
YW	99
M	22

RAINBOW BLACKBIRD 209

**COW**

Consignor: **RAINBOW ANGUS FARM**  
A nice first calf heifer sired by the Genex Masterpiece Sire, S A V Bismarck 5682 whose progeny have performed well in the show ring and in the test stations for years. Outstanding EPD's on this member of the Ankony Blackbird cow family. She sells with a 10/16/18 heifer calf sired by Deer Valley Ten X 3014 whose EPD's are +16 -1.3 +59 +108 +35 \$B +124.08.

# 94 P/CC 619 BARBARA OF 405

SITZ TOP GAME 561X  
44 TEAMMATE

DOB 12/14/15  
Tatt 619  
Reg. 19129308

EF BLACKCAP 1067  
CHERRY CRK HIGHER STANDARD  
ERF BARBARA 405 OF 1211  
ECHO RIDGE BARBARA 1211

CED	12
BW	.1
WW	56
YW	104
M	35

**COW**

Consignor: **PRATT CATTLE COMPANY**  
Another daughter of 44 Teammate, the son of Sitz Top Game 561X being used at Pratt Cattle Company. This young female is from the Barbara cow family. Great EPD's on this coming three year old. Due to calve on 1/20/19 to 44 Old Dominion whose EPD's are +1 +2.2 +59 +98 +27 \$B +110.47.

# 97 B G S BLACKCAP 778

CONNEALY ONWARD  
SITZ UPWARD 307R

DOB 9/7/15  
Tatt 778  
Reg. 18541223

SITZ HENRIETTA PRIDE 81M  
BOYD FORWARD 6025  
B G S BLACKCAP 678

CED	6
BW	2.0
WW	60
YW	110
M	33

B G S BLACKCAP 613

**COW**

Consignor: **RAINBOW ANGUS FARM**  
A daughter of the Genex Masterpiece Sire, Sitz Upward 307R out of a dam sired by the Select Sires bull, Boyd Forward 6025. Just a three-year-old from the Blackcap cow family at Rainbow Angus Farm. She sells with a 9/17/18 heifer calf sired by Deer Valley Ten X 3014 whose EPD's are +16 -1.3 +59 +108 +35 \$B +124.08.

# 95 J/ 605 SHORITA OF 1309

CONNEALY ONWARD  
WERNER WAR PARTY 2417

DOB 12/6/15  
Tatt 605  
Reg. 18539714

BAAR USA LADY JAYE 489  
G A R DAYLIGHT  
ERF SHORITA 1309 OF 1036  
ECHO RIDGE SHORITA 1036

CED	11
BW	.2
WW	45
YW	84
M	25

**COW**

Consignor: **PRATT CATTLE COMPANY**  
A daughter of the very popular Select Sires bull, Werner War Party 2417 out of a dam sired by G A R Daylight. Just a coming three year old who has a bright future ahead of her. Due to calve on 12/29/18 to the service of 44 Teammate whose EPD's are +12 +.4 +56 +106 +38 \$B +139.62.



**WERNER WAR PARTY 2417**





## BT RIGHT TIME 24J

## 99 RV RIGHT TIME LADY

BT RIGHT TIME 24J

DOB 3/10/11

RV RIGHT TIME RITO

Tatt RV10

MBF MIS 616 OF M635 104

Reg. 17032417

S A V 8180 TRAVELER 004

LUCAS LADY 004 6500

CED	0
BW	2.6
WW	39
YW	62
M	24

LUCAS KATINKA 7M6

**COW**

**OHP**

### Consignor: RHEA VALLEY ANGUS

Another great producing cow with the pedigree to back it up. She was bred to the Accelerated Genetics pathfinder bull, Leachman Right Time on 6/6/18. Pregnancy checked safe. Due to calve on 3/15/19.

## 98A RV MYTTY KITTY

MYTTY IN FOCUS

DOB 4/13/16

CONNELY IN SURE 8524

Tatt R617

ENTREENA OF CONANGA 657

Reg. 18710198

RV RIGHT TIME RITO

CED	11
BW	-.7
WW	40
YW	72
M	35

RV RIGHT TIME LUCY

RV TC LUCY GIRL

**COW**

**OHP**

### Consignor: RHEA VALLEY ANGUS

A daughter of the Genex sire, Connealy In Sure 8524. She was bred on 6/6/18 to the Accelerated Genetics pathfinder bull, Leachman Right Time. Pregnancy checked safe. Her mother sells in this sale also. Due to calve on 3/15/19.

## 100 RV RIGHT TIME LUCY

BT RIGHT TIME 24J

DOB 3/6/11

RV RIGHT TIME RITO

Tatt RV17

MBF MIS 616 OF M635 104

Reg. 17032416

TC DIVIDEND 963

RV TC LUCY GIRL

CED	3
BW	.9
WW	36
YW	62
M	30

RV ROCKN LUCY GIRL

**COW**

**OHP**

### Consignor: RHEA VALLEY ANGUS

Can't say enough about this great producing cow. Very easy to work with and has always been AI'd and given us some great herd bulls. Her 2016 heifer sells in this sale also. She was bred to the Select Sires bull, Tehama Bando 155 on 7/26/18. Pregnancy checked safe. Due to calve 5/4/19.

## 98B RV ACE OF DIAMONDS BANDIT

TEHAMA BANDO 155

DOB 3/1/16

RV TEHAMA BANDO BANDIT

Tatt R649

RV RIGHT TIME LUCY

Reg. 18560963

LL UPWARD 59LL

CED	2
BW	1.2
WW	45
YW	79
M	29

RV UPWARD DIAMOND LUCY

ACE LUCY 149

**COW**

**OHP**

### Consignor: RHEA VALLEY ANGUS

This bred heifer is very stout and deep-bodied and has the pedigree to match. Bred on 7/26/18 to Genex sire, D R Gold Rush Y209. Pregnancy checked safe. Due to calve on 5/4/19.

## 101A GHS LASS 7131

GAR-EGL PROTEGE

DOB 11/3/17

DALTONS RITO 1138 OF E24

Tatt 7131

DALTONS BELLE ROSE 6268

Reg. 19222276

CONNELY CAPITALIST 028

W H S CAPITALIST LASS A5

CED	4
BW	2.3
WW	65
YW	108
M	28

W H S PREDESTINED LASS 771

**COW**

### Consignor: STOVALL LIVESTOCK

A good daughter of our maternal sibling to WHS Limelight 64V. Notice that her WW and REA EPD's rank in the top 10% of non parent females and her \$B and YW, CW and Milk EPD's also rank in the top 30% or better. She has plenty of grow in her.



# GHS RITA 7119

THE WEST VIRGINIAN X134

DOB 10/12/17

OFF NG A390

Tatt 7119

OAK FRONT BANBANA 390

Reg. 19222288

SITZ UPWARD 307R

CED	1
BW	3.2
WW	72
YW	136
M	24

GHS RITA 353

LAWS SHANTA X118

**COW**

## STOVALL LIVESTOCK

Consignor:

A granddaughter of Sitz Upward 307R out of our very good Oak Front Farms bull whose daughters are working well for us. Her EPDs rank her in the top 1% for YW and \$B and 2% for WW, with her \$W in the top 10%.



# GHS ERICA 793

CONNEALY CONSENSUS

DOB 9/28/17

K C F BENNETT FORTRESS

Tatt 793

THOMAS PATRICIA 9705

Reg. 19222286

CONNEALY LEAD ON

GHS ERICA 328

BLACK VENTURE

CED	12
BW	-.6
WW	59
YW	104
M	35

**COW**

## STOVALL LIVESTOCK

Consignor:

A K C F Bennett Fortress daughter out of a Connealy Lead On cow, out of the immortal EXT. She has WW and YW EPDs in the top 25% of the breed. \$W in top 3%, and Milk in top 2%. She should raise big stout calves.



# GHS HEATHER LASS 7106

THE WEST VIRGINIAN X134

DOB 10/5/17

OFF NG A390

Tatt 7106

OAK FRONT BANBANA 390

Reg. 19222277

RITO 2B94 OF RITA 6K20 BW

CED	5
BW	-1.0
WW	47
YW	78
M	28

LAZY ACRES HEATHER LASS 093

LAZY ACRES HEATHER LASS 4101

**COW**

## STOVALL LIVESTOCK

Consignor:

A nice big middled heifer whose mama is a calf raising machine. Her EPD's indicate she will be an easy keeper as does her look. Her sire and dam stay in good flesh all the time.



# GHS LASS 748

BASIN EXPEDITION R156

DOB 9/18/17

BASIN EXCITEMENT

Tatt 748

BASIN LADY S532 AK

Reg. 19222303

G A R SUNRISE

WHS SUNRISE LASS 68B

W H S BUSHWACKER LASS 21N

CED	4
BW	.9
WW	71
YW	114
M	21

**COW**

## STOVALL LIVESTOCK

Consignor:

A Basin Excitement daughter out of a Sunrise raised by Buddy Shelton. Her YW EPD is in the top 15% of the breed and her WW and \$W in the top 4%. A Royal pedigree and good EPD's. What more could you want?



**BASIN EXCITEMENT**



# GHS EDNA 741

BASIN EXPEDITION R156

DOB 9/16/17

BASIN EXCITEMENT

Tatt 741

BASIN LADY S532 AK

Reg. 19222310

L T 598 BANDO 9074

D R EDNA 5605

D R MAX DIVIDEND 1742

CED	8
BW	2.4
WW	69
YW	124
M	21

**COW**

## STOVALL LIVESTOCK

Consignor:

A Basin Excitement daughter out of a good old L T Bando 9074. The Bando 9074s work well and this heifer should too. \$B and \$W in top 15% and WW and YW in top 5% and 4% respectively. Yep. She'll work.

**103A GHS BLACKBIRD 732**

YON FINAL ANSWER A489

DOB 9/11/17

GHS A489 577

Tatt 732

GHS CLOVA 324

Reg. 19222298

CONNELY COMRADE 1385

CED	14
BW	-2.2
WW	42
YW	91
M	32

GHS BLACKBIRD 527

GHS BLACKBIRD S929 5664 M223

**COW**

**STOVALL LIVESTOCK**

Consignor:

A calf out of a first calf heifer, she traces back to a cow purchased from the Matneys by way of Comrade and SAV Mandan. Her great granddam is still in production with a calving interval of 15@365 and she ratios 13@97 in our herd.

**104A TAYLOR BLACKCAP 178**

G A R PROPHET

DOB 11/4/17

WILLIAMS PROPHET 834-190

Tatt 178

2 BAR 5050 NEW DESIGN 0494

Reg. 19026370

WILLIAMS MILE HIGHER 100

TAYLOR MILE HIGH B8

ACE BLACKCAP 523

CED	5
BW	1.7
WW	67
YW	110
M	31

**COW**

**TAYLOR ANGUS**

Consignor:

A daughter of the Williams Prophet 834-190 bull who serves as the resident herd sire at Taylor Angus in Elizabethton, TN. Outstanding EPD's on this young heifer from the Blackcap cow family at Ace Cattle Company. Sells open.

**103B GHS CLOVA 718**

MCC DAYBREAK

DOB 9/2/17

QUAKER HILL RAMPAGE 0A36

Tatt 718

QHF BLACKCAP 6E2 OF 4V16 4355

Reg. 19222295

WERNER WAR PARTY 2417

CED	5
BW	2.4
WW	82
YW	138
M	28

GHS CLOVA 454

GHS MISS NOBLE W141 S23 109

**COW**

**STOVALL LIVESTOCK**

Consignor:

A Rampage out of a War Party daughter, this one goes back to one of my most prolific cow families, they stay around because they just work. And look at her EPD's. Top 1% for WW and YW EPD's and \$W and 4% \$B. She will produce scale mashing calves.

**104B TAYLOR BLACKBIRD 171**

SITZ UPWARD 307R

DOB 9/8/17

M A F 14U3

Tatt 171

M A F 11512

ACE POWER UP 965

TAYLOR BLACKBIRD Y1

W R F BLACKBIRD 430

Reg. 18874490

CED	9
BW	1.0
WW	55
YW	94
M	27

**COW**

**TAYLOR ANGUS**

Consignor:

A granddaughter of the Genex Masterpiece sire, Sitz Upward 307R out of a dam from the Blackbird cow family. Her dam is sired by the Ace Power Up 965 bull bred in the Ace Cattle Company herd in Jonesboro, TN. Nice balanced EPD's on this open heifer.

**103C GHS BLACKBIRD 715**

MCC DAYBREAK

DOB 8/30/17

QUAKER HILL RAMPAGE 0A36

Tatt 715

QHF BLACKCAP 6E2 OF 4V16 4355

Reg. 19222293

WERNER WAR PARTY 2417

CED	3
BW	2.1
WW	61
YW	103
M	25

GHS BLACKBIRD 450

MATNEY BLACKBIRD M223

**COW**

**STOVALL LIVESTOCK**

Consignor:

A Quaker Hill Rampage 0A36 daughter out of Werner War Party 2417 that goes back to a Matney Blackbird cow. She has Growth EPD's in the top 20% for WW, 30% for YW, and 15% for \$W, but look at her REA EPD. Top 1% of the breed.



**QUAKER HILL RAMPAGE 0A36**

**104C TAYLOR BLACKCAP 712**

SITZ UPWARD 307R

DOB 8/16/17

M A F 14U3

Tatt 712

M A F 11512

Reg. 18868031

TWIN OAKS FOCUS 978

CED	10
BW	.3
WW	57
YW	99
M	30

S E O BLACKCAP1052

S E O BLACKCAP 928

**COW**

Consignor: **TAYLOR ANGUS**

Another daughter of the Sitz Upward 307R son bred in the Mullins Angus Farm herd in Clintwood, VA. M A F 14u3 left many good progeny in the Taylor Angus herd. The dam descends from the Blackcap cow family. Balanced EPD's on this open heifer.

**105 S E O BLACKCAP1052**

TT FOCUS 857

DOB 8/14/13

TWIN OAKS FOCUS 978

Tatt 1052

TWIN OAKS HEIRESS 882

Reg. 17581322

WAR ALLIANCE 9126 6006

CED	7
BW	1.0
WW	51
YW	91
M	29

S E O BLACKCAP 928

S E O BLACKCAP 803

**COW**

Consignor: **TAYLOR ANGUS**

A proven producer sired by Twin Oaks Focus 978 out of a dam sired by WAR Alliance 9126 6006. Balanced EPD's on this female from the Blackcap cow family. She sells with a 9/8/18 bull calf sired by Williams Prophet 834-190. Bull calf's EPD's are +9 +.7 +66 +112 +33. Her last year's heifer calf also sells in this sale.

**106 TAYLOR BLACKBIRD Y1**

SITZ UPWARD 307R

DOB 10/12/11

ACE POWER UP 965

Tatt Y1

ACE EVER ENTENSE 657

Reg. 17286722

WOODHILL FORESIGHT

CED	6
BW	1.6
WW	40
YW	71
M	23

W R F BLACKBIRD 430

W R F BLACKBIRD 206

**COW**

Consignor: **TAYLOR ANGUS**

A granddaughter of the Genex Masterpiece Sire, Sitz Upward 307R out of a dam sired by Woodhill Foresight. This proven producer comes from the Blackbird cow family. Her last year's heifer calf also sells in this sale. She sells with a 9/28/18 bull calf sired by Williams Prophet 834-190 whose EPD's are +11 +.4 +81 +132 +37 \$B +163.12.

**107A NRF ALTUNE OF CONANGA 2015**

EXAR UPSHOT 0562B

DOB 10/10/16

EXAR DENVER 2002B

Tatt 2015

EXAR ROYAL LASS 1067

Reg. 18751546

S A V PIONEER 7301

CED	-1
BW	6.1
WW	75
YW	123
M	19

ALTUNE OF CONANGA 021

JVC ALTUNE OF CONANGA 803

**COW**

Consignor: **WINDY HILL CATTLE**

This female is in the top 5% for both WW and YW. Top 30% for all carcass EPD's and top 20% of the breed for \$B. She's a direct daughter of EXAR Denver 2002B back to a daughter of S A V Pioneer 7301. Pasture exposed from 9/1/18 until 12/1/18 to Williams Prophet 834-170 whose EPD's are +9 +1.4 +79 +142 +30 \$B +161.77.

**107B NRF COUNTESS 2016**

EXAR UPSHOT 0562B

DOB 9/16/16

EXAR DENVER 2002B

Tatt 2016

EXAR ROYAL LASS 1067

Reg. 18751547

S A V PIONEER 7301

CED	8
BW	2.4
WW	61
YW	98
M	15

ALTUNE OF CONANGA 021

JVC ALTUNE OF CONANGA 803

**COW**

Consignor: **WINDY HILL CATTLE**

A direct daughter of EXAR Denver 2002B back to a daughter of S A V Pioneer 7301. The granddam of this female is a full sister to the featured AI sire, Connealy Onward. This female ranks in the top 15% for Marbling and top 20\$ for Weaning Weight. Pasture exposed from 9/1/18 until 12/1/18 to Williams Prophet 834-170 whose EPD's are +9 +1.4 +79 +142 +30 \$B +161.77.

**108 WILSON 5050 PROPHET 118**

G A R PROPHET

DOB 2/13/18

WILLIAMS PROPHET 834-170

Tatt 0118

2 BAR 5050 NEW DESIGN 0494

Reg. 19053330

HC TRAVELER 1152H19

CED	10
BW	1.0
WW	61
YW	100
M	32

DJMF CC717A 13B 0416

QUAKER HILL 1407

**COW**

**DDP**

Consignor: **WINDY HILL CATTLE**

A granddaughter to one of the great sires, G A R Prophet. She is in the top 5% for Milk, top 20% for Calving Ease as well as top 5% for \$W. Nice young female from first time consignor Windy Hill Cattle.



## LIVE INTERNET BIDDING AT [www.cowbuyer.com](http://www.cowbuyer.com)

- View/bid online in Real Time
- Registration is required. Please register at least one (1) hour prior to sale time at [www.cowbuyer.com](http://www.cowbuyer.com)
- High Speed Internet is required. Slower speed will not permit you to bid and keep pace in real time.
- Terms: Purchasing online constitutes a legal contract and promise for payment of purchases. All purchases must be paid within ten (10) days of sale date and prior to load out or delivery of cattle purchased.
- Cowbuyer LLC is a service provider and is not responsible for the activity or inactivity of any technology, internet connection at the sale site or connection and technology of the bidders

For questions or information, contact:

**Aaron Ray Tompkins – 336/363-4639, [atompkin@vt.edu](mailto:atompkin@vt.edu)**

# 2018 EXTRA BULL INFORMATION

LOT	FS	M	S	TS	SC	Rib Fat	Rump Fat	RE	IM	\$W	\$B
1	7.0	4	3	15	39.5	.32	.44	13.4	4.12	+74.30	+175.65
2	6.4	4	3	15	38.0	.23	.20	15.3	3.29	+54.13	+184.62
3	4.9	3	3	14	37.5	.29	.33	14.2	4.16	+74.64	+155.75
4	6.5	4	3	15	41.0	.34	.33	13.3	3.74	+50.28	
5	6.4	4	3	16	36.0	.16	.36	12.7	3.16	+53.26	+145.39
6	5.4	4	3	16	38.0	.47	.44	13.0	4.78	+53.65	+123.03
7	6.3	3	3	14	37.5	.31	.37	11.3	4.01	+44.83	+132.43
8	5.9	4	3	14	38.0	.50	.51	11.9	4.28	+43.06	+88.08
9	5.4	3	3	14	37.0	.56	.57	13.1	3.94	+59.92	+91.99
10	5.4	3	3	14	37.5	.36	.51	13.1	3.53	+55.22	+94.78
11	5.1	4	3	15	38.0	.47	.37	12.2	3.98	+51.99	+114.17
12	5.8	3	3	14	33.0	.39	.45	14.0	4.50	+63.78	+169.82
13	4.8	4	3	14	32.5	.47	.46	14.5	3.33	+78.09	+129.92
14	5.6	4	3	15	33.5	.59	.54	13.6	5.89	+57.54	+104.58
15	7.0	3	3	14	35.0	.31	.38	13.7	4.34	+60.15	+136.67
16	5.0	4	3	14	39.0	.39	.41	11.7	3.54	+49.41	+130.42
17	5.4	4	3	15	39.0	.31	.28	13.5	4.04	+44.41	+92.87
18	5.2	3	3	14	38.5	.40	.41	15.7	3.49	+66.38	+113.83
19	6.1	3	3	14	39.0	.43	.40	13.7	4.22	+58.64	+159.57
20	6.1	3	3	14	37.0	.51	.46	15.5	4.02	+41.66	+121.76
21	5.6	3	3	14	35.0	.63	.63	14.6	7.48	+60.33	+127.66
22	5.2	4	3	15	36.0	.34	.34	15.0	3.47	+49.34	+41.88
23	5.4	3	3	15	37.0	.33	.37	13.2	4.32	+51.22	142.41
24	5.1	4	3	15	36.5	.45	.46	13.2	2.45	+46.98	+129.25
25	5.8	4	3	14	34.5	.35	.30	14.3	3.86	+80.22	+144.01
26	4.9	4	3	15	36.0	.33	.30	13.9	3.59	+60.23	+178.16
27	5.3	4	3	15	37.0	.38	.44	14.1	5.99	+68.40	+161.09
28	6.5	4	3	15	38.0	.36	.50	15.2	4.67	+68.32	+152.20
29	5.5	4	3	16	35.5	.40	.41	13.3	4.80	+67.05	+141.07
30	5.5	3	3	14	36.5	.32	.34	12.9	4.80	+65.60	+163.92
31	6.7	4	3	15	37.5	.40	.37	15.4	4.68	+65.65	+168.38
32	6.8	4	3	15	37.0	.38	.51	16.0	4.57	+70.51	+166.36
33	5.1	3	3	14	41.5	.54	.57	13.4	4.59	+67.95	143.14
34	5.8	4	3	14	39.0	.39	.50	15.6	3.77	+62.31	+143.14
35	6.9	4	3	16	40.5	.41	.38	15.8	3.64	+53.28	+139.39
36	7.3	3	3	15	36.0	.44	.48	13.4	4.86	+69.04	161.01
37	6.9	4	3	16	36.0	.40	.62	14.9	3.70	61.78	+139.54
38	6.3	3	3	14	41.0	.34	.44	13.4	4.08	+50.43	+174.66
39	5.9	4	3	16	37.0	.45	.49	16.4	4.86	+45.24	+153.65
40	6.1	4	3	15	36.0	.20	.34	16.1	2.52	+53.45	+142.91
41	5.9	4	3	16	38.0	.45	.37	15.2	6.24	+40.62	+135.07
42	5.1	4	3	15	32.0	.36	.35	14.4	2.63	+67.14	+137.87
43	6.6	4	3	15	39.0	.40	.41	13.7	4.97	+58.85	+156.15
44	5.6	4	3	14	40.5	.29	.31	13.3	3.55	+63.27	+154.74
45	5.7	4	3	15	37.5	.49	.55	14.1	3.29	+82.93	+124.28
46	5.2	3	3	15	34.0	.53	.61	12.3	5.11	+70.86	+121.46
47	5.6	4	3	15	40.0	.45	.55	13.5	3.87	+66.38	+82.93
48	6.5	4	3	16	38.5	.23	.23	13.8	4.15	+70.10	170.43